

# Lafayette Plaza

775 Lafayette Rd, Portsmouth, NH 03801

# FOR LEASE



## PROPERTY HIGHLIGHTS

- Super Regional Trade Area
- Available SQFT: 22,704+-
- Total GLA: 117,646
- Subdivided Space 10,416 +- SF
- Total Parking: 544
- Convenient access from Rt 1
- Plaza Tenants: Margaritas, FedEx, Planet Fitness, Ethan Allen, West Marine, Harbor Freight.
- ADT on Lafayette Rd- 18,484
- High Ceilings 14+-ft

### AREA DEMOGRAPHICS

	1 MILE	3 MILE	5 MILE
POPULATION	5,593	28,065	43,279
MHHI	\$102,902	\$103,444	\$102,273



**For More Information Contact**

Jeff Bruk 978.857.1891(Mobile) [jbruk@brukrealtyadvisors.com](mailto:jbruk@brukrealtyadvisors.com)  
 Zach Bruk 978.857.3387(Mobile) [zbruk@brukrealtyadvisors.com](mailto:zbruk@brukrealtyadvisors.com)

48 Pleasant Street | Suite 5 | Newburyport, MA 01950  
 Office 978.255.2360 | [www.brukrealtyadvisors.com](http://www.brukrealtyadvisors.com)

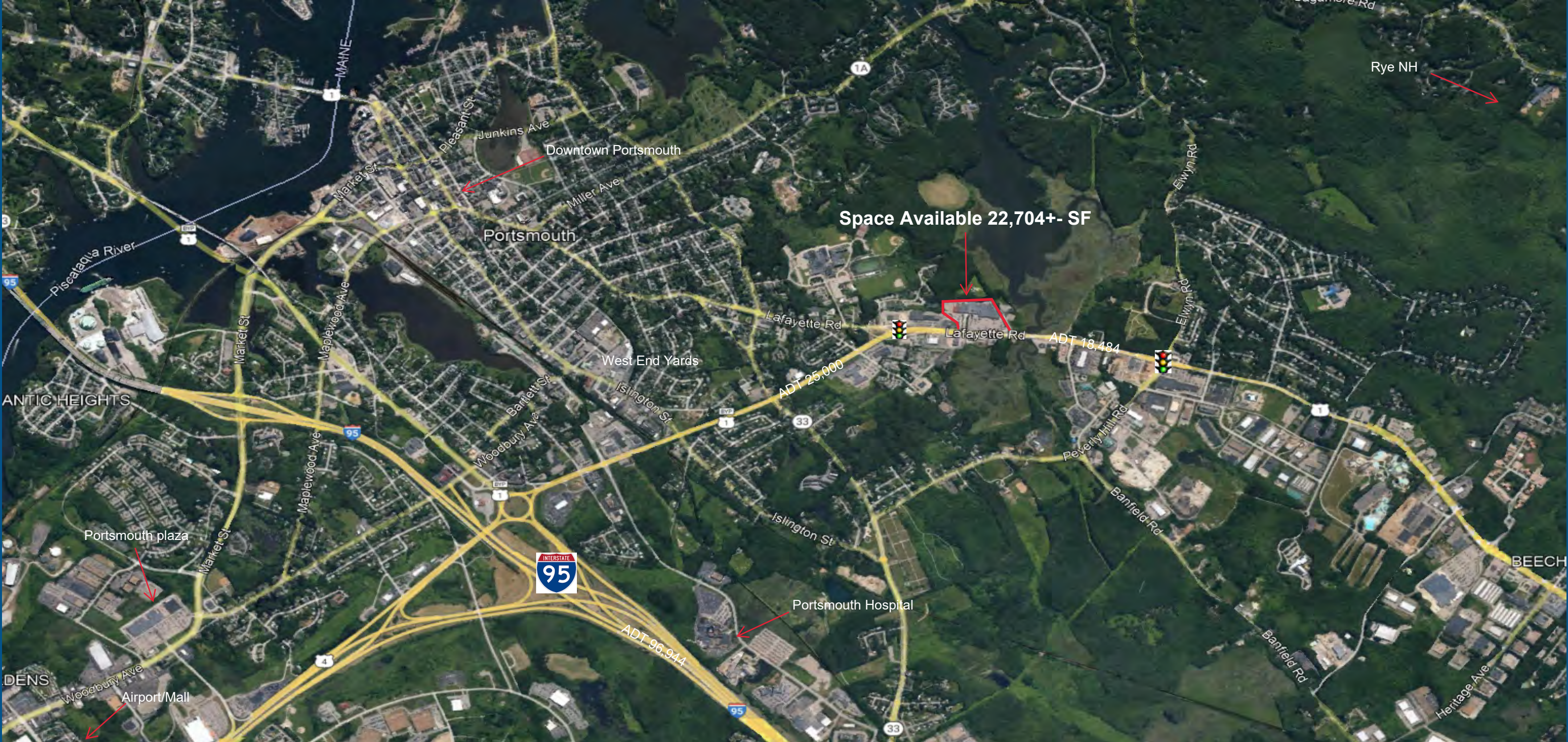




# Lafayette Plaza

FOR LEASE

775 Lafayette Rd, Portsmouth, NH 03801



For More Information Contact

Jeff Bruk 978.857.1891(Mobile) jbruk@brukrealtysadvisors.com

Zach Bruk 978.857.3387(Mobile) zbruk@brukrealtysadvisors.com

The information and images contained herewith have been obtained from sources deemed to be reliable. However, Bruk Realty Advisors makes no guarantee, warranty, or representation as to the accuracy or completeness thereof. Images shown may not be current and may be modified for illustrative purposes.



# Lafayette Plaza

775 Lafayette Rd, Portsmouth, NH 03801

**FOR  
LEASE**

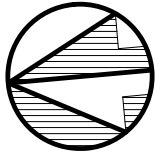


**For More Information Contact**  
Jeff Bruk 978.857.1891(Mobile) [jbruk@brukrealtyadvisors.com](mailto:jbruk@brukrealtyadvisors.com)  
Zach Bruk 978.857.3387(Mobile) [zbruk@brukrealtyadvisors.com](mailto:zbruk@brukrealtyadvisors.com)

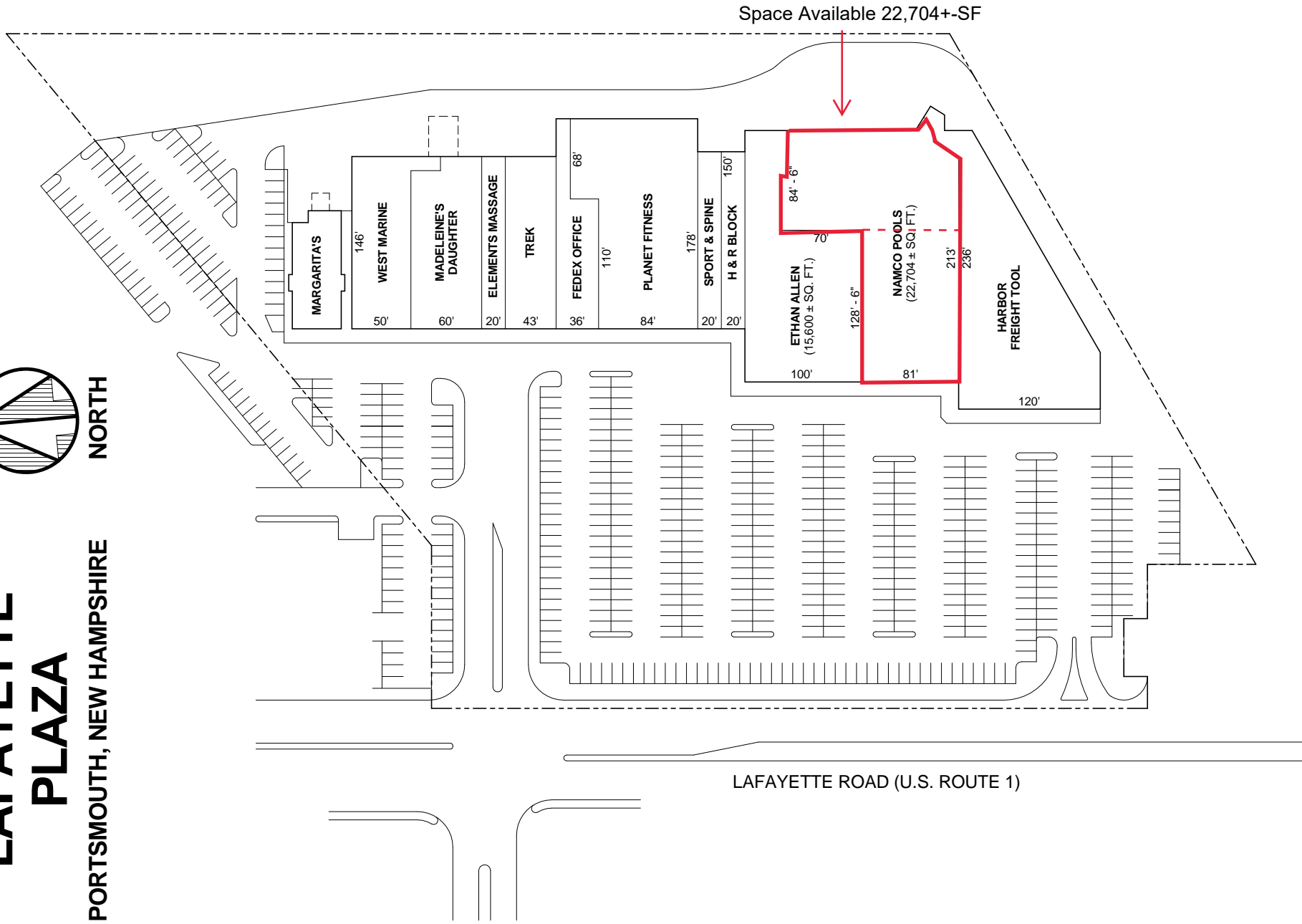
48 Pleasant Street | Suite 5 | Newburyport, MA 01950  
Office 978.255.2360 | [www.brukrealtyadvisors.com](http://www.brukrealtyadvisors.com)

# LAFAYETTE PLAZA

PORTSMOUTH, NEW HAMPSHIRE



NORTH



Space Available 22,704+-SF

LAFAYETTE ROAD (U.S. ROUTE 1)